

ROMANIAN FIBER OPTIC CONFERENCE

AFOR

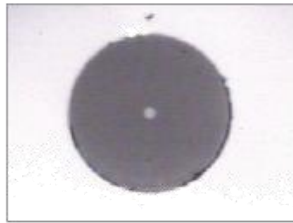
6th March 2018

Christian Kraemer
AFL EMEA Sales Director

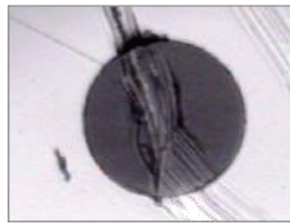


Basic Conditions for Successful Fiber Optic Testing?

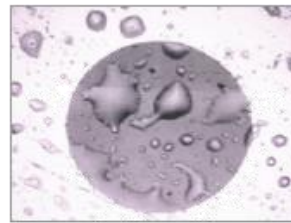




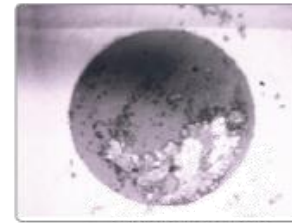
Clean end-face



Deep groove



Oil / finger print



Dirt / debris

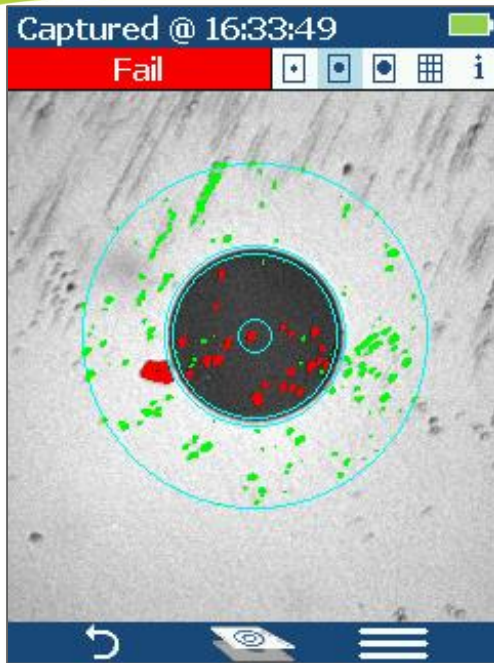
FOCIS Flex



Make live easy

- Inspect with an Auto-focus probe
- Press ONE button only
- Auto-Analysis
- Auto-Send
- Auto-Save
- Generate a Report

Captured Image & Results



Captured @ 16:33:49		
Fail		
IEC: PC, SM, ORL ≥ 45 dB		
A B C		
A		
	>0 μm : 0	>0 μm : 1
B		
		2-5 μm : 16
	>3 μm : 0	>5 μm : 4
C		
D		
		>10 μm : 1

Auto Analysis

- Pass / Fail
- Zoom
- Analysis Data
- IEC 61300-3-35

Region	Scratches	Defects
A: Core	>0 μm : 0 (No scratches > 0 μm allowed)	>0 μm : 0 (No defects > 0 μm allowed)
B: Cladding	>3 μm : 0 (No scratches > 3 μm allowed)	2-5 μm : 5 (Up to 5 defects 2-5 μm diameter allowed)
		>5 μm : 0 (No defects > 5 μm allowed)
C: Adhesive	Blank (No limitations on scratches)	Blank (No limitations on scratches)
D: Contact	Blank (No limitations on scratches)	≥ 10 μm : 0 (No defects ≥ 10 μm allowed)

Capture and View Results



- Press 'Capture' button at FOCIS Flex
- FOCIS Flex auto-focuses, captures, analyzes, and sends to
 - FLEXSCAN OTDR
 - Android or IOS Smart Device
- Image and pass/fail results are displayed
- Save or Share Results





- Cleaning Saves Time and Money
- Maximizes the performance of the network
- Extends the life of connectors



Cleaning Tools



Push-type Cleaners



Reel-type Cleaners



Fluids



Wipes and cards



Sticks, tips & Swabs



Kits

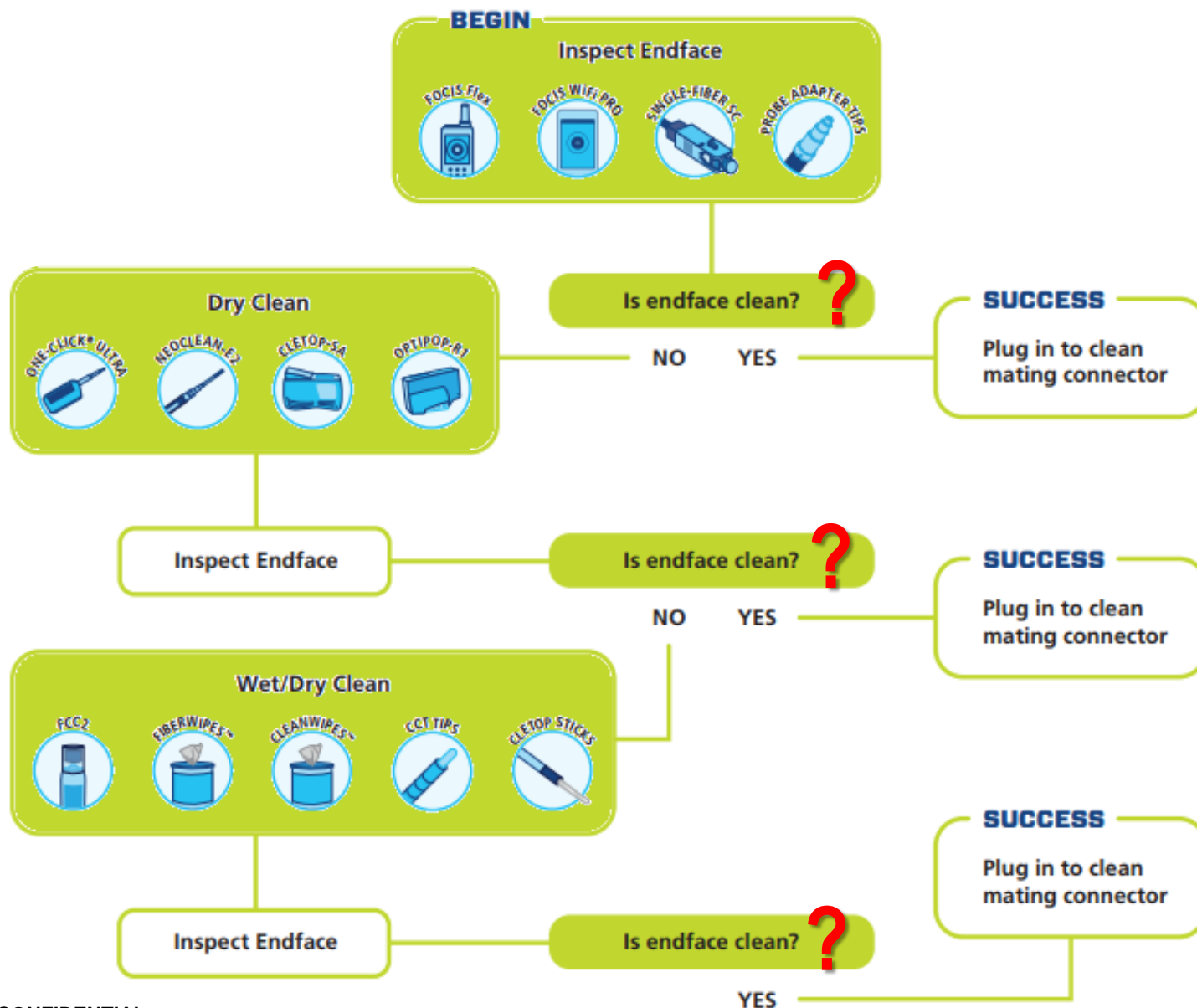
Fiber optic connectors and adapters must be cleaned every time they are going to be mated.



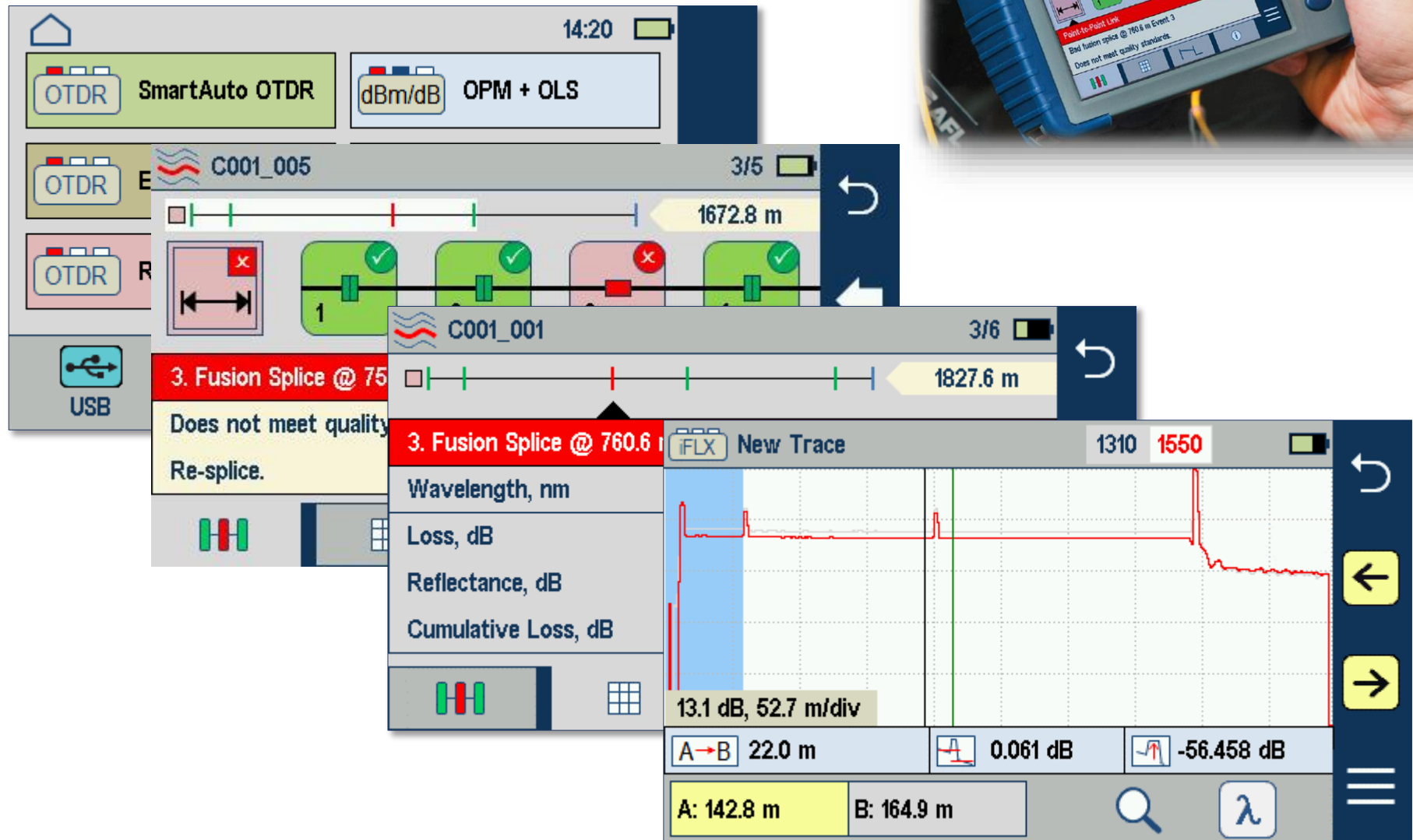
This means:

- Clean the **test ports** of your test equipment
- Clean the **launch cord** and **test jumper connectors**
- Clean the **mating connector** through the adapter
- Clean the **cables under test**
- **Clean before every time connectors are mated**

How to Start the Measurement Process



SmartAuto OTDR in Motion



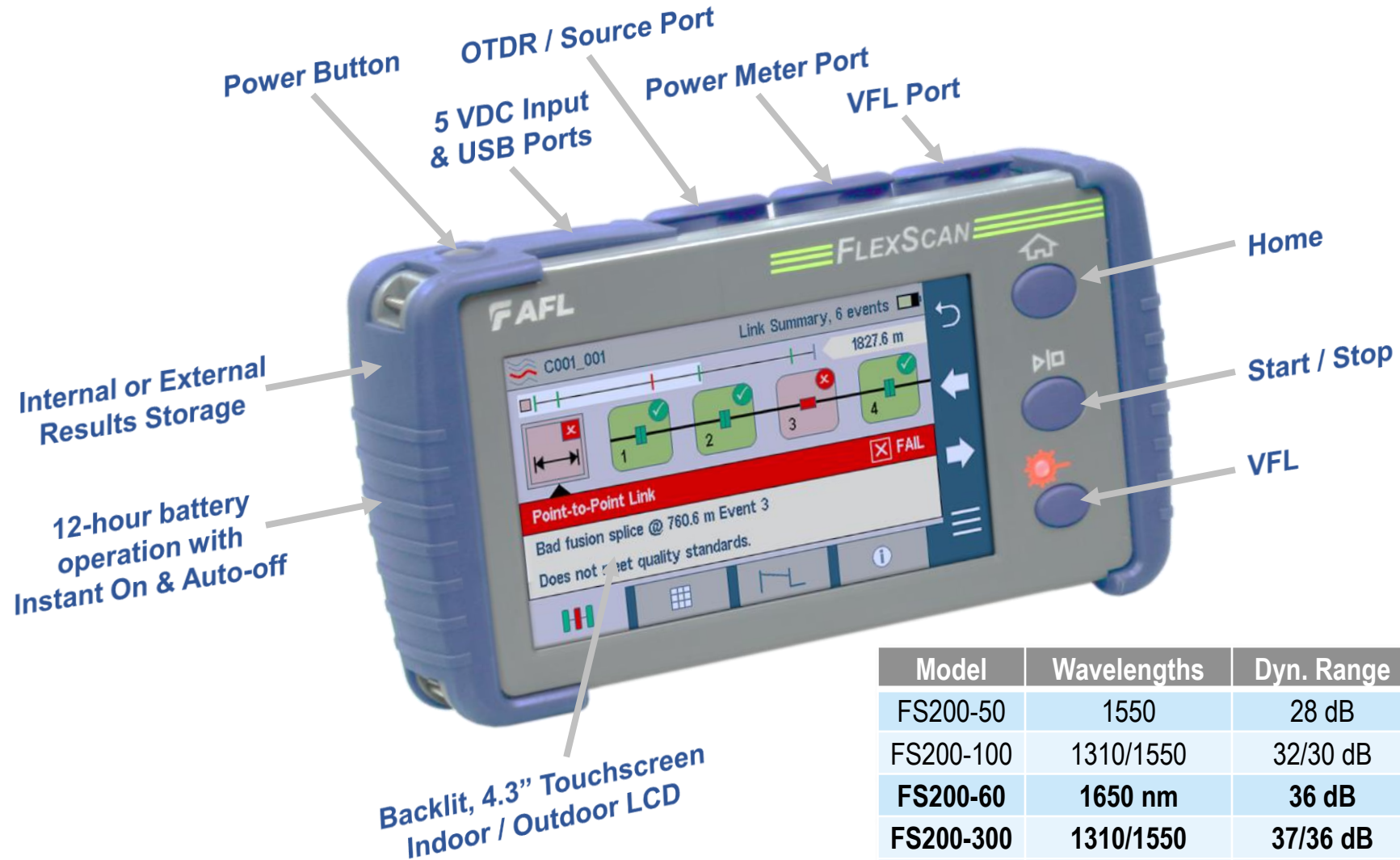
FLEXSCAN™ OTDR

- Pocket Sized
- Performance Packed
- User Friendly
- *And Affordable*

- Handheld **OTDR / Fault Locator** family
 - **PON** and **Point-to-Point** testing available at 1310/1550 nm
 - **Live fiber** testing at 1650 nm (filtered detector)
- **SmartAuto™** – Automatic scan using multi-pulse, network-optimized settings
 - Short pulses for closely spaced events (nearby or before splitter)
 - Long pulses for long fiber or through splitters
- **LinkMap® View** – Network Configuration at a glance
- **Pass/Fail Analysis**
 - Overall network health
 - Fault Detection: Location and reason
- Integrated **Source, Power Meter, VFL**
- **Pair with FOCIS Flex** Inspection Probe
- **Touch-screen** – Easy navigation
- **Bluetooth & USB** file transfers



Front Panel Controls & Display



Model	Wavelengths	Dyn. Range	PON
FS200-50	1550	28 dB	
FS200-100	1310/1550	32/30 dB	
FS200-60	1650 nm	36 dB	✓
FS200-300	1310/1550	37/36 dB	✓
FS200-304	1310/1550/1650	37/36/37 dB	✓

➤ Tools which make your fiber optic testing easy:

OTDR



Inspection
Probe



Cleaning Tools



Thank You!



www.AFLglobal.com
sales@aflglobal.com

More Product and Solution info

- **FlexScan OTDR**



➤ More info at <https://goo.gl/QWisi6>

➤ Video at <https://goo.gl/wWPhqu>

- **ROGUE & aeRos Solution**



➤ More ROGUE at <https://goo.gl/Rm5TXi>

➤ Video at <https://goo.gl/SD1EXH>

➤ More aeRos at <https://goo.gl/QBeC8c>

➤ Video at <https://goo.gl/1U5Xsh>