

Loaded 100%



map navigation

wo

statistics

data central



Business solutions

- money transfer
- net banking
- strategic planning
- statistics
- video conferencing
- e-mail, ftp
- database working

Entertainment

- files
- music
- games
- e-books
- chats

Internet

- websites
- hosting
- banners
- searching systems
- blogs
- chats
- applications

Business solutions

- money transfer
- net banking
- strategic planning
- statistics
- video conferencing
- e-mail, ftp
- database working

Security

- vpn
- data safe

```
module 1 "Image sampler (artificial)" {
  parameter 42 "ImageSamplerType" 1
  parameter 6 "FilterType" 0
  parameter 10 "FilterKernel" 20000000 0 0 0
  parameter 7 "FilterSize" 4 000000
  parameter 8 "FilterParam" 0 000000
  parameter 9 "FilterParam2" 0 000000
  parameter 10 "FilterParam3" 0 000000
}

module 2 "Image sampler" {
  parameter 94 "ImageSamplerType" 1
  parameter 95 "ImageSamplerType2" 2 000000
  parameter 96 "ImageSamplerType3" 3 000000
  parameter 97 "ImageSamplerType4" 4 000000
  parameter 148 "ImageSamplerType5" 5 000000
  parameter 212 "ImageSamplerType6" 6 000000
  parameter 213 "ImageSamplerType7" 7 000000
  parameter 214 "ImageSamplerType8" 8 000000
}

module 3 "Image sampler" {
  parameter 15 "ImageSamplerType" 1
  parameter 16 "ImageSamplerType2" 2 000000
  parameter 17 "ImageSamplerType3" 3 000000
  parameter 18 "ImageSamplerType4" 4 000000
  parameter 19 "ImageSamplerType5" 5 000000
  parameter 20 "ImageSamplerType6" 6 000000
  parameter 21 "ImageSamplerType7" 7 000000
  parameter 22 "ImageSamplerType8" 8 000000
}
```

COMPLETE SOLUTION IN I&M OF FIBER OPTIC

ROMKATEL
Diana Bucur

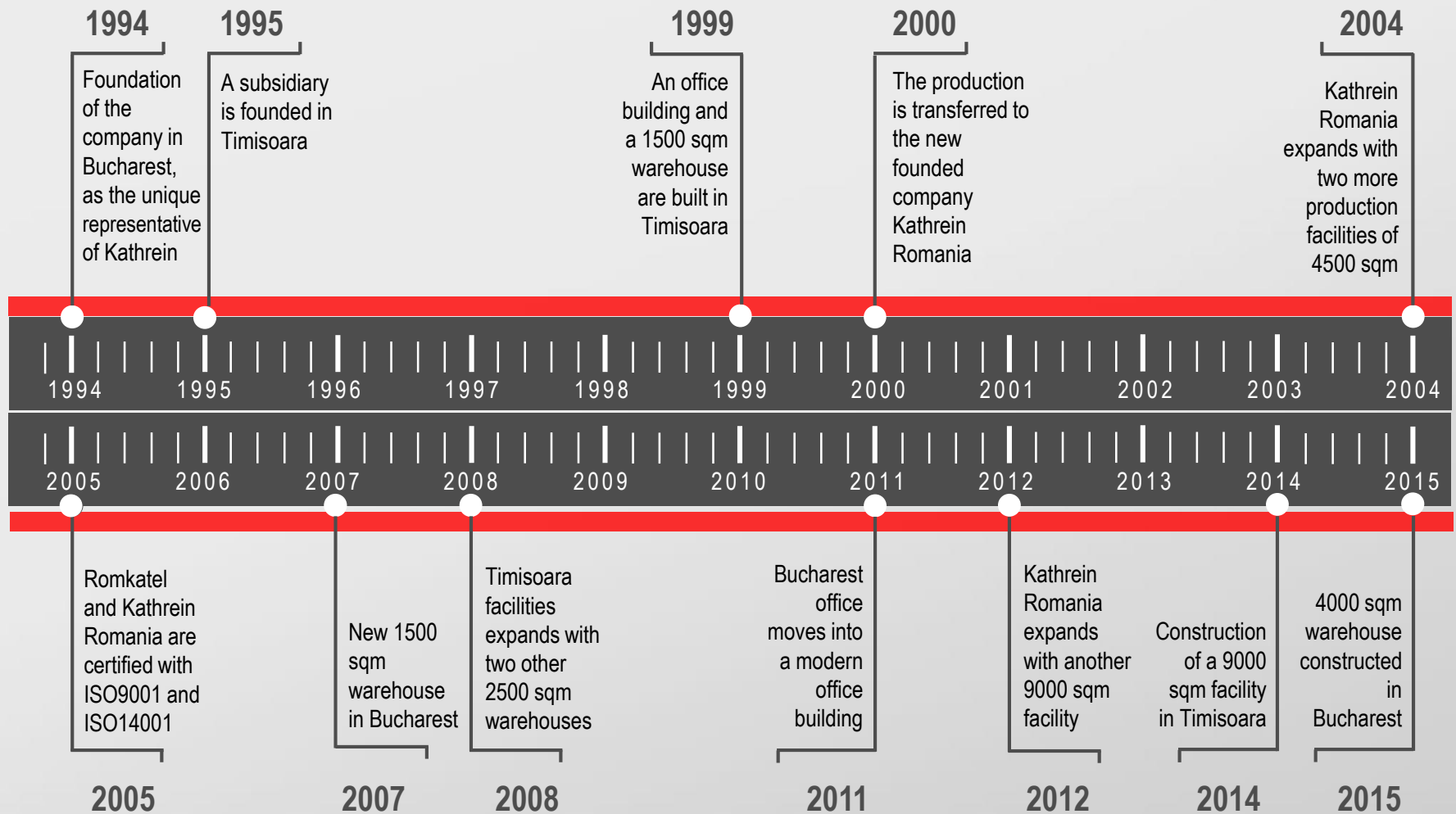
2018

| RFOC 2018, Bucharest |

06.03.2018

ROMKATEL

Romkatel & Kathrein Romania Milestones



Romkatel office and warehouse in Bucharest



Izvor St. Headquarters



Warehouse - Magurele

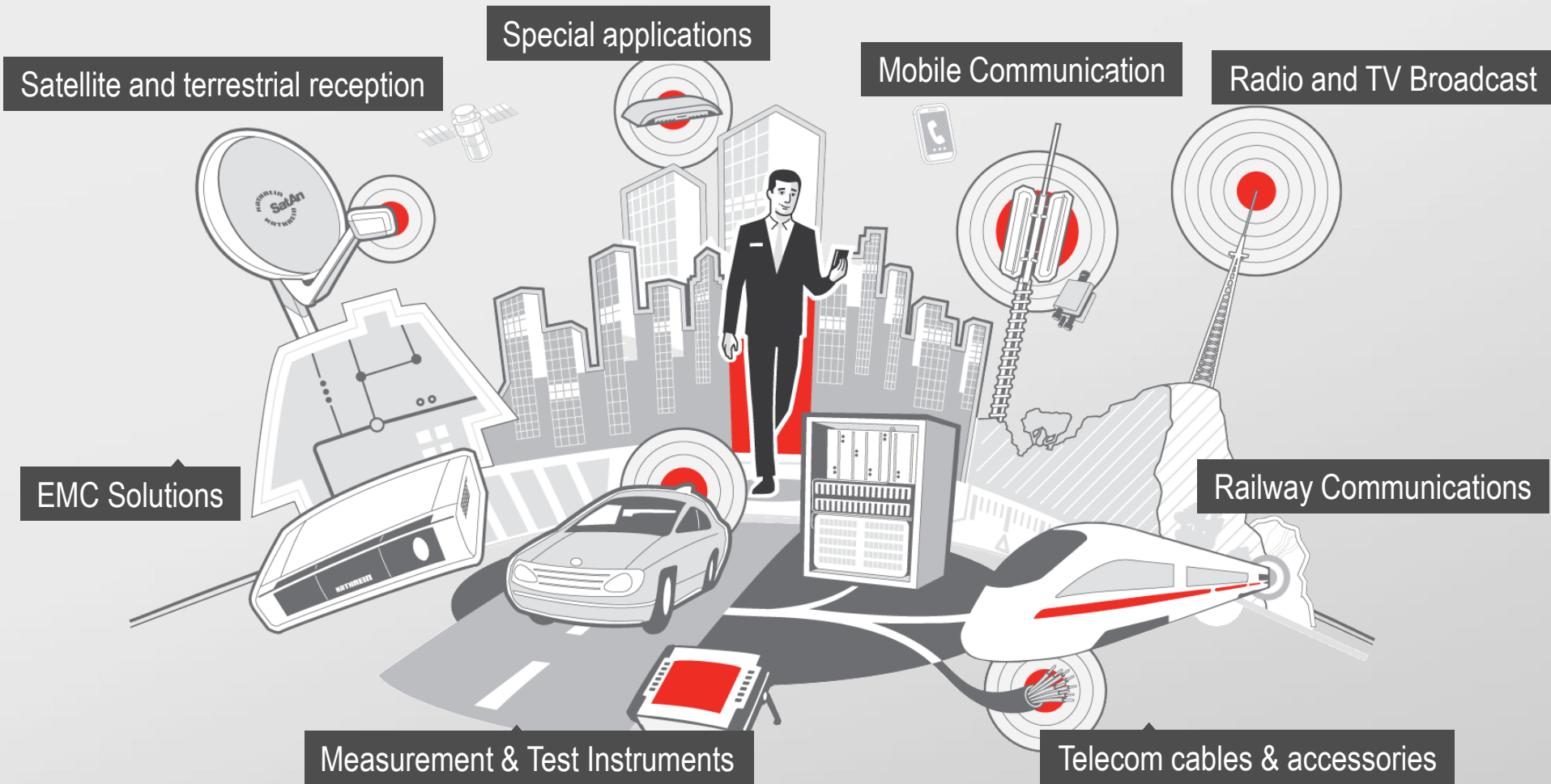


65 employees
over 19 mil € turnover



4000 sqm storage area

Romkatel fields of activity



Romkatel' s optics portfolio

1. Partners:

Anritsu
Kingfisher
Rosenberger
Telegartner
AND Solutions

2. Tools:

LS-OPM
OTDR
Transport measurements - 100GE and beyond
Monitoring systems

Network Master Family

•Transport



MT9090A Network Master GigE	MT1000A Network Master Pro	MT1100A Network Master Flex
Dedicated field test solution for installation and troubleshooting Ethernet links in access network	All-in-one dual-port transport tester supporting from 1.5 Mbps to 10 Gbps including OTN, Ethernet, CPRI/OBSAI, Fibre Channel, SDH/SONET and PDH/DSn	All-in-one, up to 4-port transport tester supporting from 1.5 Mbps to 100 Gbps including OTN, Ethernet, CPRI/OBSAI, Fibre Channel, SDH/SONET and PDH/DSn

•Optical



MT9090A Drop Cable Fault Locator	MT9090A Optical Channel Analyzer	MT9090A μ OTDR
Compact fault locator for easy and accurate verification of drop cable installation	Compact CWDM channel analyzer to verify power levels, drift and channel presence of CWDM networks	Compact OTDR for fully automatic verification of optical networks, FTTH PON, metro and core

Anritsu Network Master Series

Solution for both Legacy and Carrier Ethernet Network

All-in-One Transport Tester
1.5 Mbps ~ 100 Gbps x 4 ports

Network Master Flex MT1100A



Network Master Flex
MT1100A

All
-in-one

100G
4 ports

OTN
flex
mapping

Mobile
Backhaul

Ethernet

OTN

All-in-One Handy Tester
1.5 Mbps ~ 10 Gbps x 2 + **25/100 Gbps**

Network Master Pro MT1000A



All
-in-one

OTN
full
mapping

Easy
-to-use

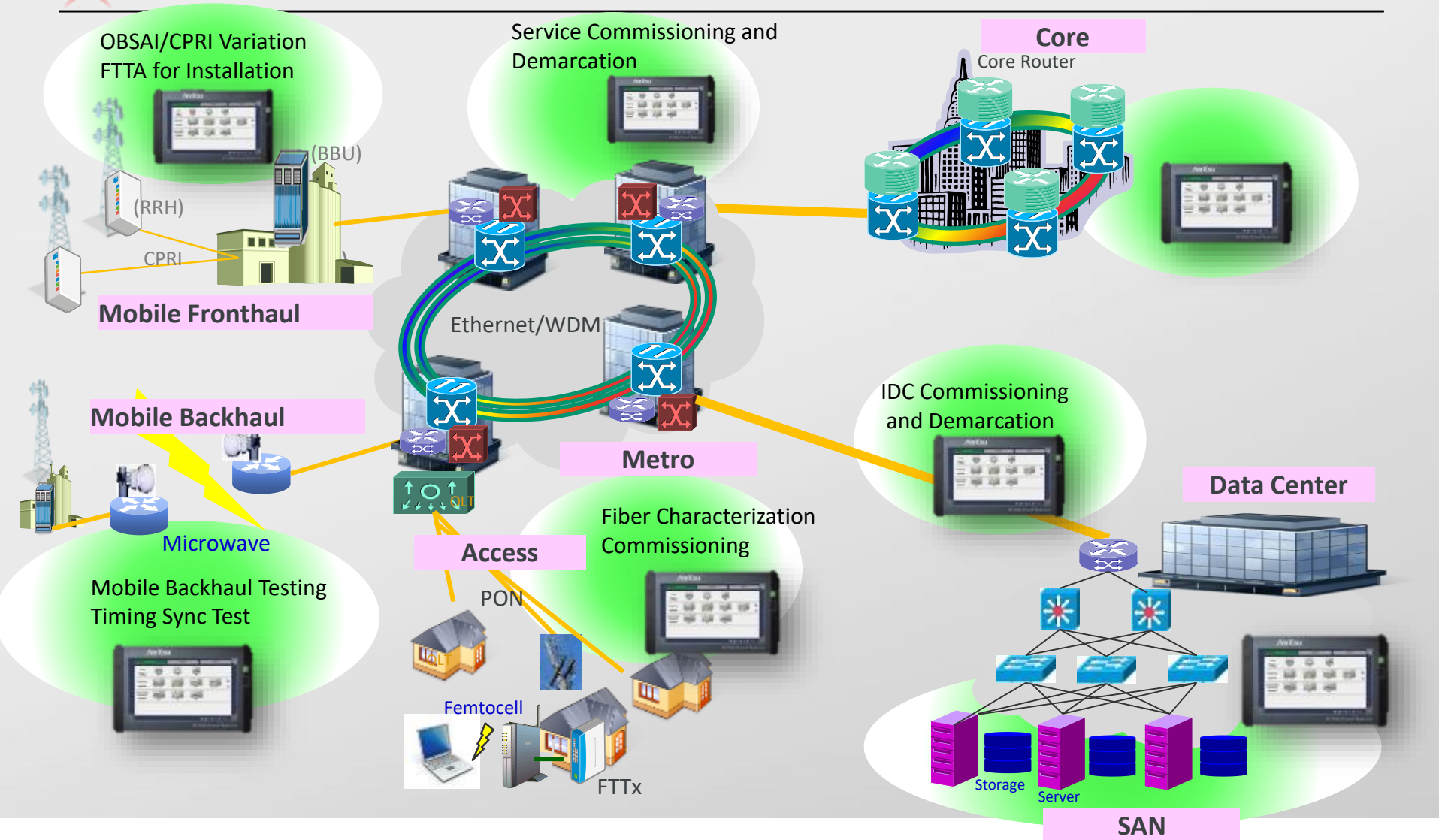
Mobile
Backhaul

Ethernet

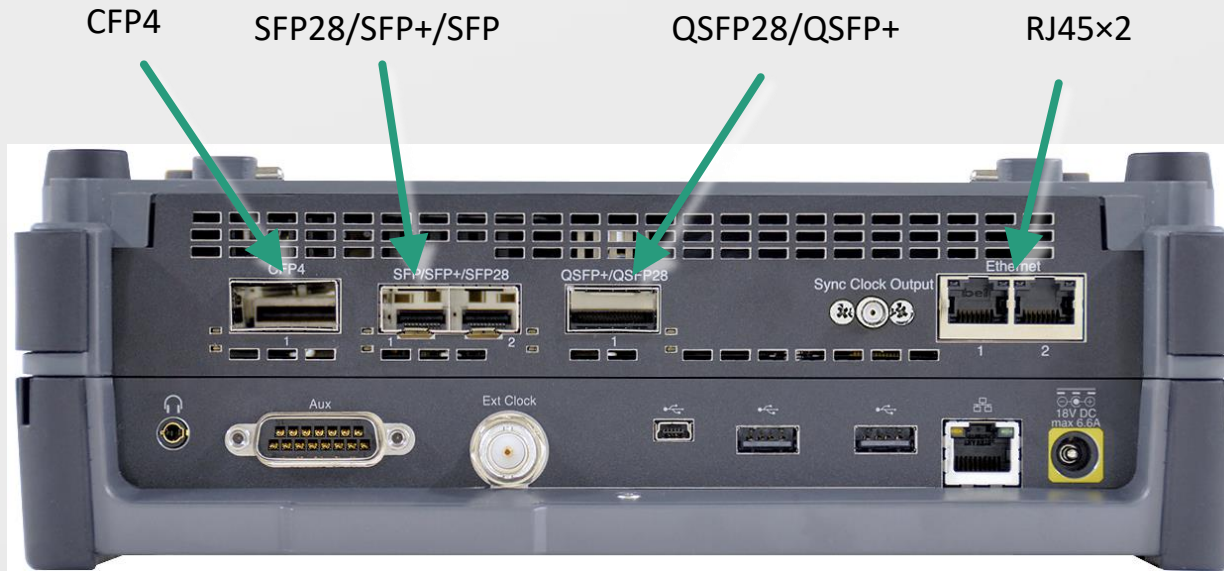
OTN

- All test functions for carrier-class Ethernet commissioning and troubleshooting (I&M) tests (RFC6349, RFC2544, ITU-T Y.1564, Ethernet OAM, etc., network evaluations)
- Sync Ethernet tests and analyses, including SyncE and PTP
- Supports CPRI/OBSAI
- Supports optical fiber tests (OTDR, etc.)
- Easy-to-use GUI plus compact and light-weight design with battery operation
- WiFi and Bluetooth connections
- PDF and XML reporting functions

MT1000A everywhere



MU100011A 100G Multirate Module Interfaces



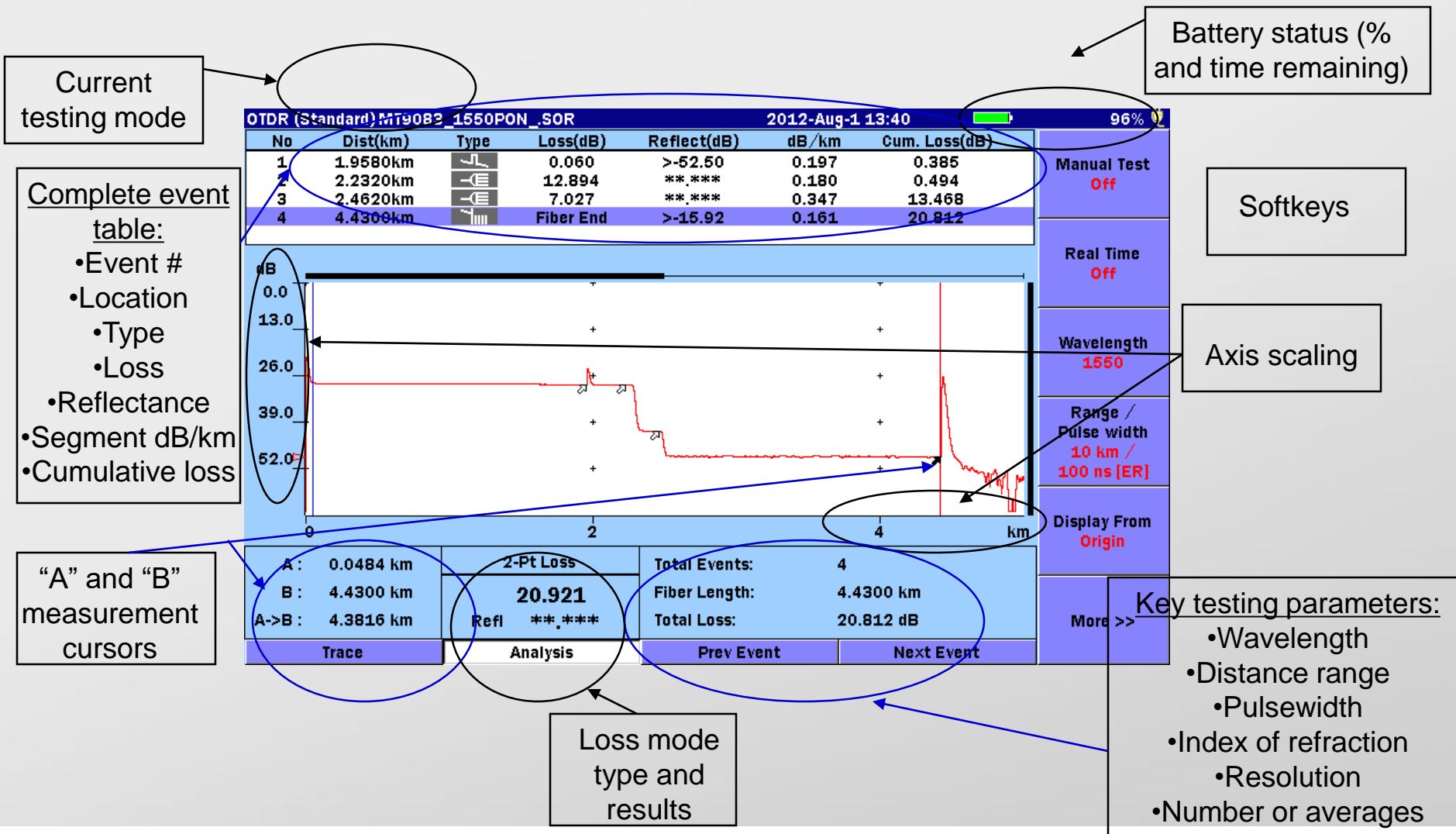
Interface	Ethernet	OTN	SDH/SONET	Fibre Channel	CPRI/OBSAI
CFP4	100GbE	OTU4	-	-	-
QSFP28	100GbE	OTU4	-	-	-
QSFP+	40GbE	OTU3	-	-	-
SFP28 /SFP+/SFP	25GbE /10GbE/GbE	OTU2x /OTU1x	STM1 to 64 OC3 to 192	1 to 16G FC	CPRI 1/2/3/4/5/6/7/8 OBSAI 1x/2x/4x/8x
RJ45	10/100 /1000M	-	-	-	-

ACCESS Master MT9083

- TFT LCD Display (7") and high resolution (800 x 480)
- Long battery operation time (12h)
- Wide Operating Temperature (-10 - +50°C)
- New shortcut keys are available
- Light weight (2.6kg)
- All models are supported sampling points up to 150,001 pts



MT9083 - All fiber information is on a single screen



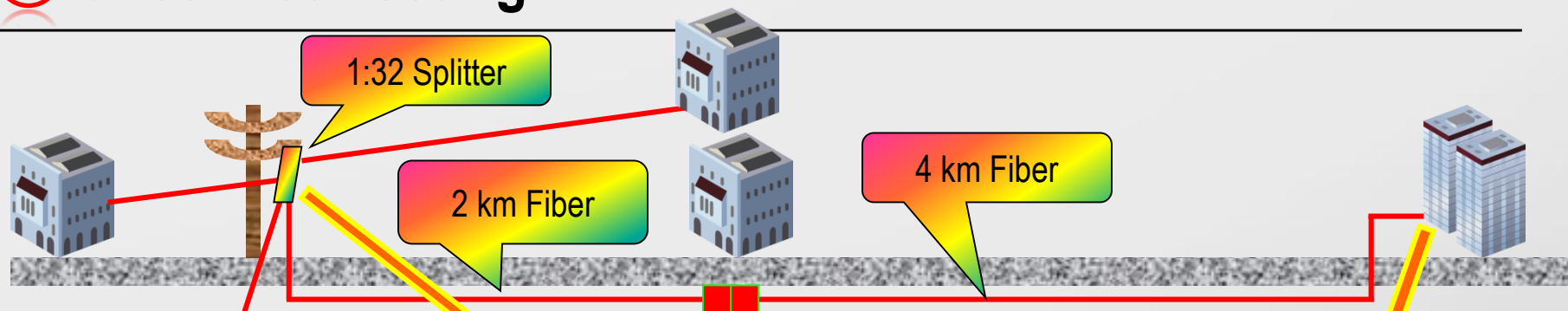
MT9090 - All required fiber tests in a single μ OTDR!

New μ OTDR is available to test optical fiber by seven functions

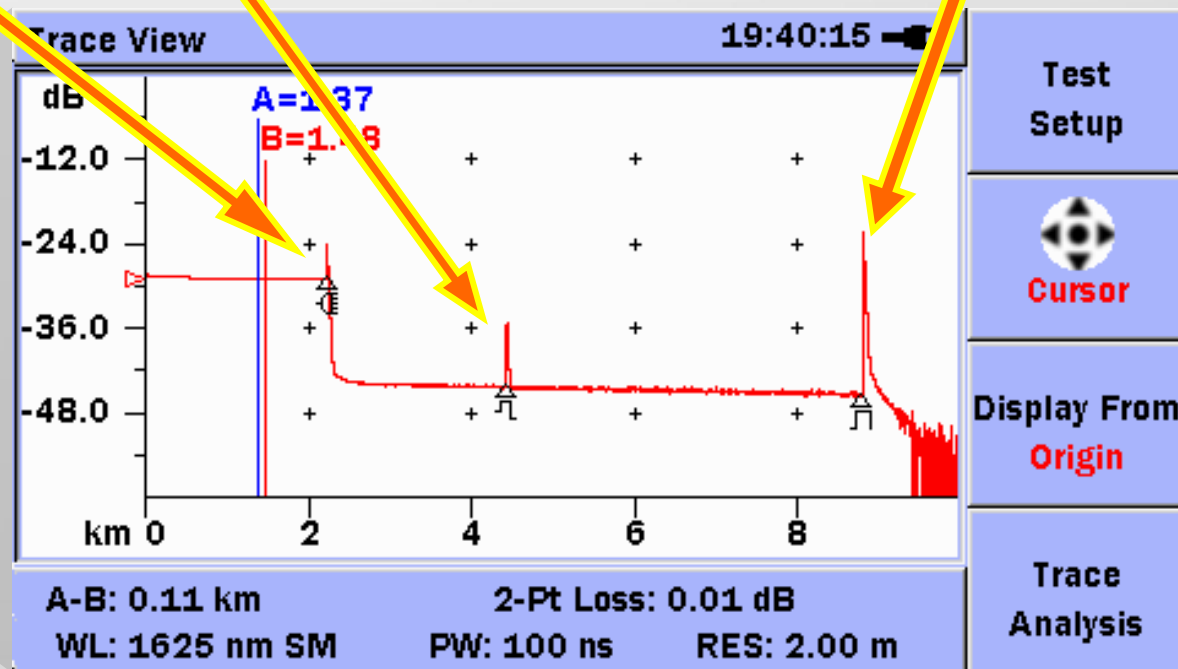
- OTDR
- Loss Test Set (LTS)
- Video Inspection Probe (VIP)
- Light Source (LS)
- PON Power Meter (PON-PM)
- Visible Laser Diode (VLD)
- Optical Power Meter (OPM)



Complete PON Measurement for both In-service & Out-of-service Testing



2.2 km Fiber



•Core-alignment

View 7	View 5
5" color display – touch screen The highest resolution GUI – user friendly interface Easy to replace electrodes SM (0.02dB), MM (0.01dB), DS (0.04dB), NZ (0.04dB) 7s arc time 13s heating time 10,000 splice data 10,000 image date 520x magnification Battery capacity - 355 splices	5" color display– touch screen The highest resolution GUI – user friendly interface Easy to replace electrodes SM (0.02dB), MM (0.01dB), DS (0.04dB), NZ (0.04dB) 7s arc time 13s heating time 520x magnification Battery capacity - 170 splices



view7

view5

view3

•Active-clad alignment

View 3	View 1	M7
5" color display – touch screen 170 splicing times 7s splicing; 30s heating 520x magnification Battery capacity - 170 splices	4.3" color display – touch screen SM (0.03dB), MM (0.02dB), DS (0.05dB), NZ (0.05dB) 7s arc time 13s heating time Battery capacity - 120 splices	4.3" color display – touch screen SM (0.03dB), MM (0.02dB), DS (0.05dB), NZ (0.05dB) 12s arc time 20s heating time Battery capacity - 110 splices


Kingfisher products family

Optical Power meters and PON meters
Optical Light Sources
Loss-test sets
DWDM/CWDM channel analyzers
Automated variable optical attenuator
Visual Fault Locators
Fiber Identifiers



Our Suppliers

KATHREIN

 Cambium Networks™







Entel

 **Ruckus**
Simply Better Wireless.



Anritsu

 spectracom

Hytera 

comnet
Communication Networks

LS  **telcom**



 **CITEL** 2CP

CLARK MASTS™

TAIYO 

 **TELDOR**
Cables & Systems Ltd.

 **CRYPTOPHONE™**

AOR

funkwerk 

 **Livingston**
test equipment rental

 **Telegärtner**

 **CEL-FI**

PANORAMA  **ANTENNAS**





 **SIERRA**
WIRELESS™

Stay Connected

