

Connecting the World

Cezar Lovin, Country Manager
 Reichle & De Massari Romania
 Bucharest, March 6th 2019

Source: Nicolas Rapp is the Graphics Director at Fortune Magazine

Agenda

- About the global connectivity
 - Sustainable Development Goals
 - Connecting the World – How can we deliver strategy

- Reichle & De Massari in the global fiber optic industry
 - History
 - New and innovative fiber optic management system 2019 global launch – how to better develop, maintain, operate fiber optic networks

Connecting the World

Sustainable Development Goals



Connecting the World

Sustainable Development Goals

Three development settings



Eradicate poverty in all its forms and dimensions



Accelerate structural transformations



Build resilience to shocks and crises

Connecting the World

Sustainable Development Goals

Signature Solutions are integrated responses to development against which we align our resources and expertise, to make real impact.



Keeping people out of **POVERTY**



ENVIRONMENT: nature-based solutions for development



GOVERNANCE for peaceful, just, and inclusive societies



Clean, affordable **ENERGY**



Crisis prevention and increased **RESILIENCE**



Women's empowerment and **GENDER** equality

Connecting the World

How we will deliver – the strategic setting

**Executive Board of the United Nations Development Programme
United Nations Population Fund
United Nations Office for Project Services**

28 November 2017, New York
UNDP Strategic Plan, 2018-2021

The UNDP vision and approach

Art. 3 [...] Digital technologies and advances in artificial intelligence have transformative implications for economies and societies, offering tremendous potential for progress.

Art. 61 A vital element supporting the global platform will be the operational infrastructure of UNDP. This embraces extensive capacities in human resources management, finance, procurement, information and communication technology, legal affairs, security and administration.

Connecting the World

How we will deliver – the strategic setting

Executive Board of the United Nations Development Programme
United Nations Population Fund
United Nations Office for Project Services

28 November 2017, New York
UNDP Strategic Plan, 2018-2021

Accelerate structural transformations for sustainable development

Art.30 *Other challenges requiring structural transformation approaches include effectively leveraging technological advances such as automation, digitalization (for instance in finance and government service delivery), the Fourth Industrial Revolution, 8 overcoming unsustainable natural resource management practices and systematically addressing insufficient or outdated infrastructure and services. To address these challenges, Governments require access to high-quality technical and policy advice, innovative development finance solutions to leverage domestic and international, public and private investments (including blended finance approaches), and greater capacities to promote innovation, South-South cooperation and knowledge-sharing.*

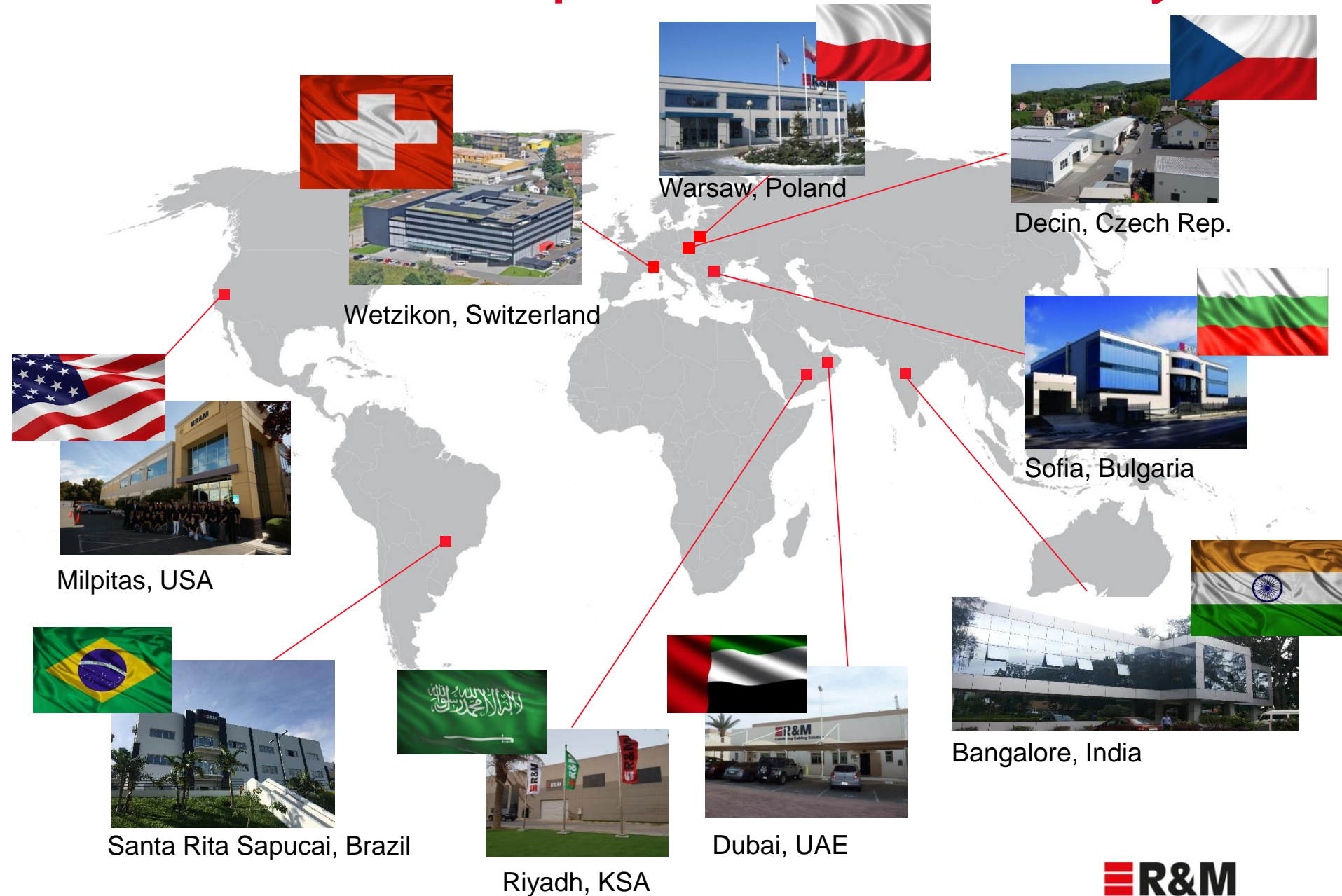
Reichle & De Massari in the global fiber optic industry

History

- Established in 1964 as an independent Swiss family business, wholly owned by Martin and Peter Reichle, R&M is a leading international provider of information and communications technology. It owns market organizations on 6 continents and over 40 countries
- Corporate Social Responsibility statement – Sustainable action in accordance with GRI standard
- R&M provides a vital contribution to a secure transmission of voice, data and video using copper and Fiber Optic System designed for use in office buildings, data centers, homes, hospitals and telecoms worldwide

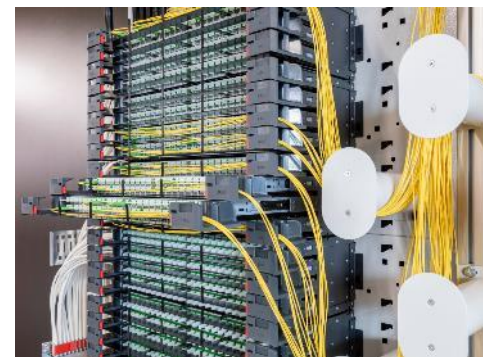
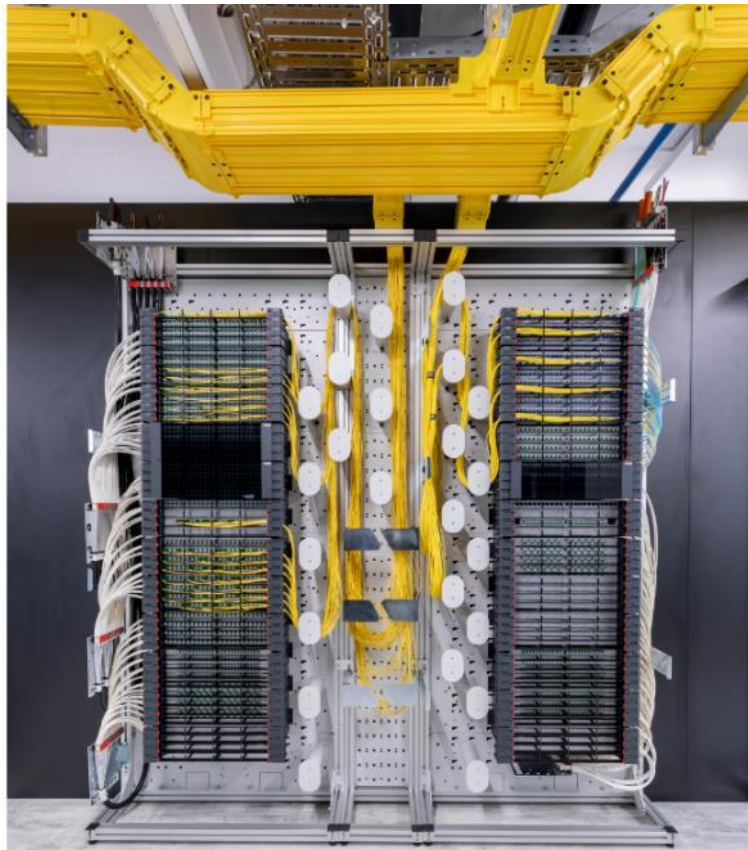
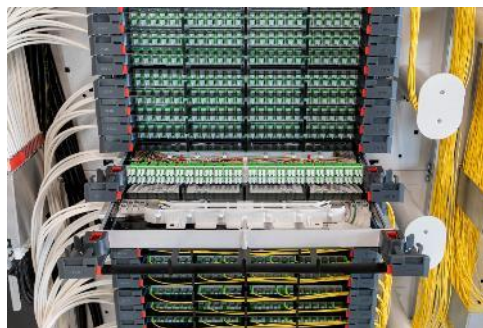


R&M decentralized production – Swiss Quality



PRIME – Optical Distribution Frame

Global launch day 14th of February 2019



PRIME – Optical Distribution Frame

- PRIME – ODF is the next generation of compact, ultra high-density Optical Distribution System, with a high module versatility, easy to install, optimized safety for ETSI and front and rear mounted 19" cabinets
- High fiber density to reduce the price per port
- The perfect solution for FTTH network (P2P, PTMP, xWDM), Access Networks, Backbones, City Rings, Data Centers, POPs



Customer First.

‘We provide connectivity that matters’

Reichle & De-Massari Romania
Herastrau Nr.1

011981 Bucharest / Romania

Phone +40 31 71 00 164

Fax +40 31 71 00 165

E-mail cezar.lovin@rdm.com

Internet www.rdm.com