

Achieving precise and efficient fiber splicing in FTTH installations

FIBER OPTIC DAY

**Konstantin Larionov
Furukawa Electric Europe**

- ❑ Japanese Company with long term vision, over 130 years of history
- ❑ Global presence in 5 continents, 60K employees worldwide, 8 global R&D facilities
- ❑ Revenue in excess of USD 10 billion
- ❑ Recognised worldwide for Innovation, Expertise and Cutting Edge Technology - "Top 100 Global Innovators" Award in 2014 & 2015

The logo for FITEl, featuring the word "FITEl" in a bold, red, stylized font. The letters are blocky and modern, with the 'i' and 'l' having a unique design.

A Furukawa Company

FTTH Solutions

- ❑ Multi-Dwelling Unit Application
- ❑ Single Family Unit Application

FTTH Optical Fiber

FTTH Optical Fiber Cable

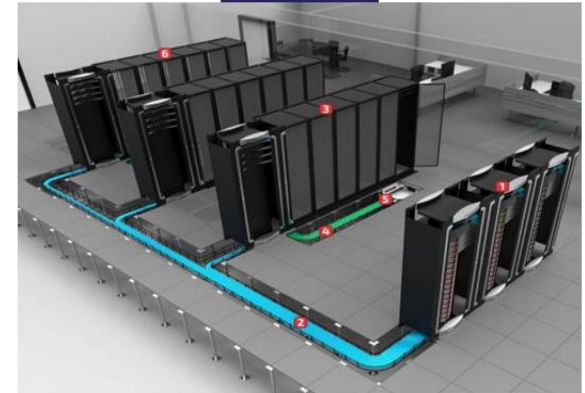
Fusion Splicers and Tools

Closures, Cabinets and Splitters

Optical connectors

Structured Cabling Solutions

IT Max Data Center solution



Enterprise Solutions



Typical Workplaces in FTTH networks

The FTTH installation includes a variety of workplaces:

- ☐ an aerial cable
- ☐ a narrow space on the ground
- ☐ a place without commercial power supply

What is fundamental is the ability to move through many termination locations quickly

Building entry point (BEP)



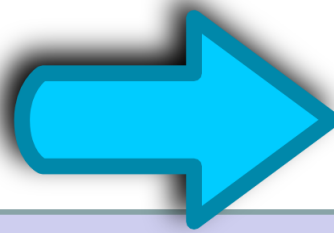
Outlets in flats (OTO)



Fiber distribution point (FCP)



Challenge in field



Fusion Splicer Feature

- ❑ Installation at height

- ❑ Limited space

- ❑ Lack of power supply source

- ❑ Consistent **low loss** and **easy splicing** (G.652 to G.657)

- ❑ Portability

- ❑ Rugged & compact design

- ❑ Ability to work extensively from a battery

- ❑ Accurate alignment method, high precision apparatus

Easy Aerial Use

The **wearable working belt** could be used to do splicing at height



***Dust and water
resistant
IP 52 – for outdoor
use***

Installation on the ground

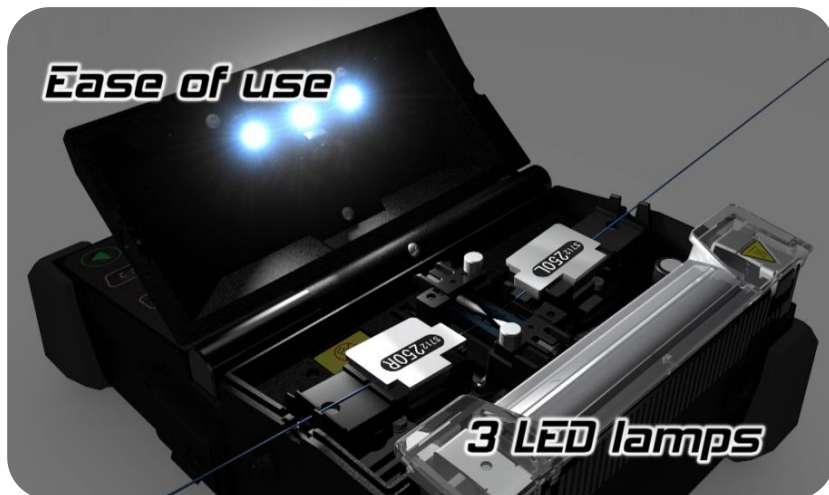
Splicer is fixed on a work table and mounted on a tripod



Shock resistance



Rubber pads (shock absorbers) at each corner allow normal operation after falling from a 76-cm height.



- ❑ Triple LED illumination allows to operate in “low light” environment



- ❑ Hand held machine



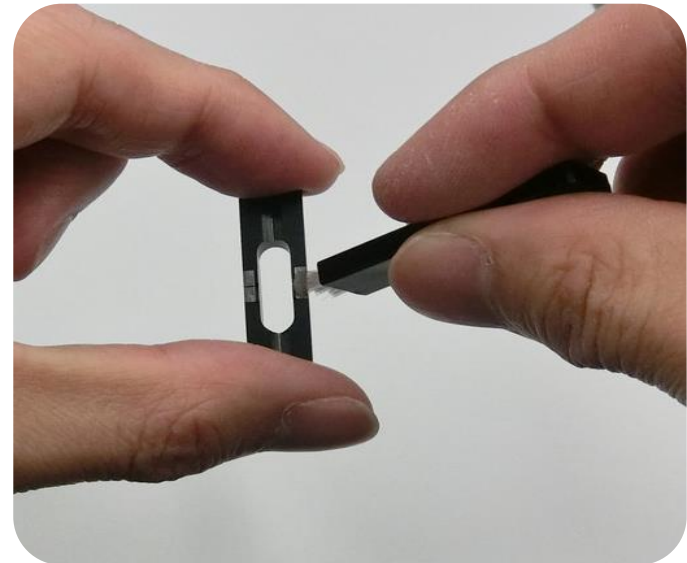
- ❑ Easily replaceable electrodes
- ❑ Durable electrodes: 5 000 splices

Easy maintenance



The condition of the V-groove is very important for stable splicing

- ❑ Detachable and washable V-groove





TELEDATANET
EXPERIENCE INNOVATION



- ☐ Covering entire country
- ☐ Single partner with more than
15 years of experience
- ☐ 2 Service centers
 - 1 in the South-East (Bucharest)
 - 1 in the North-West (Cluj)
- ☐ Training center

**THANK YOU FOR YOUR ATTENTION
AND PLEASE VISIT OUR BOOTH !**



Bound to Innovate